



SUPER STEAMTECH INDIA



The Best
PERFORMANCE
for Rotary Joint

STATIONARY SYPHON



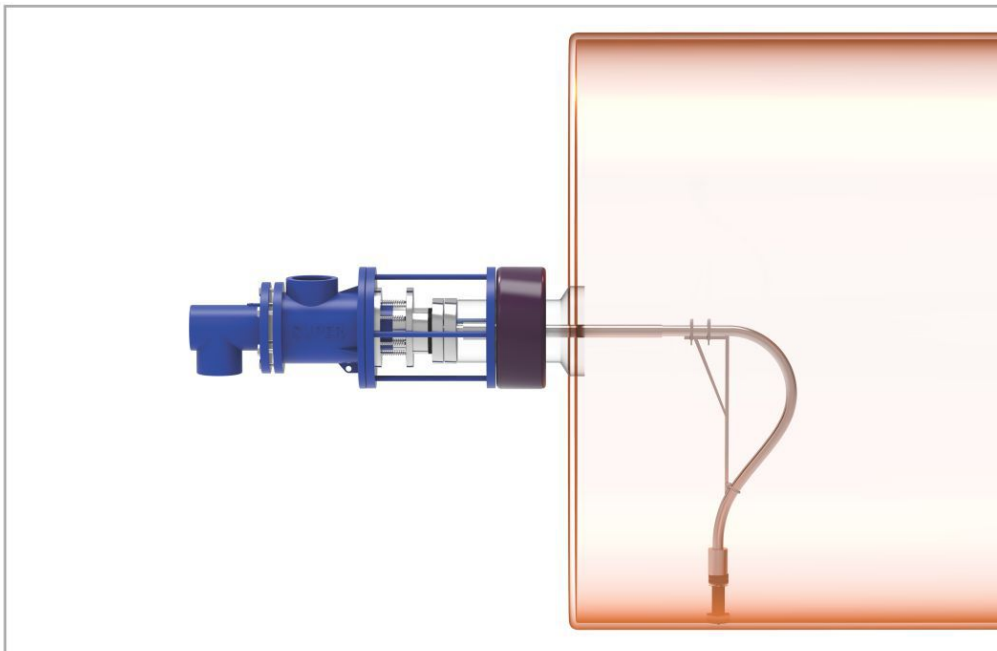
High Speed Stationary Syphon Rotary Joint



MODEL : BMR

SPEED 200rpm to 1100rpm

SIZE 2" to 3"



Rotary Joint With Dryer System

DUAL FLOW SYSTEM



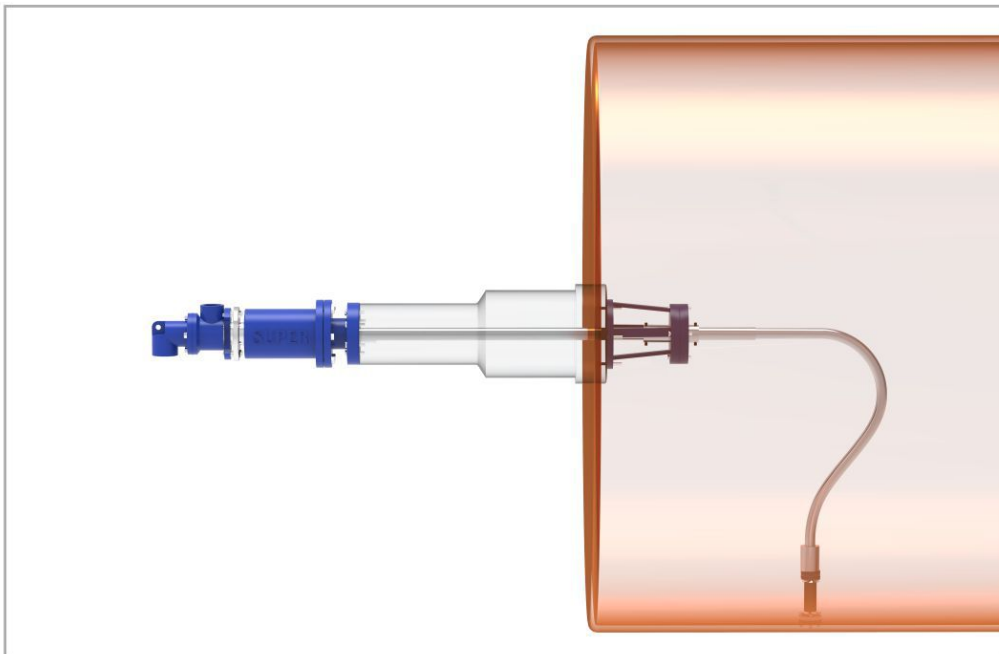
Stationary Syphon Body Rotating Rotary Joint



MODEL : TBR

SPEED 150mpm to 400mpm

SIZE 2" to 3"



Rotary Joint With Dryer System

DUAL FLOW SYSTEM

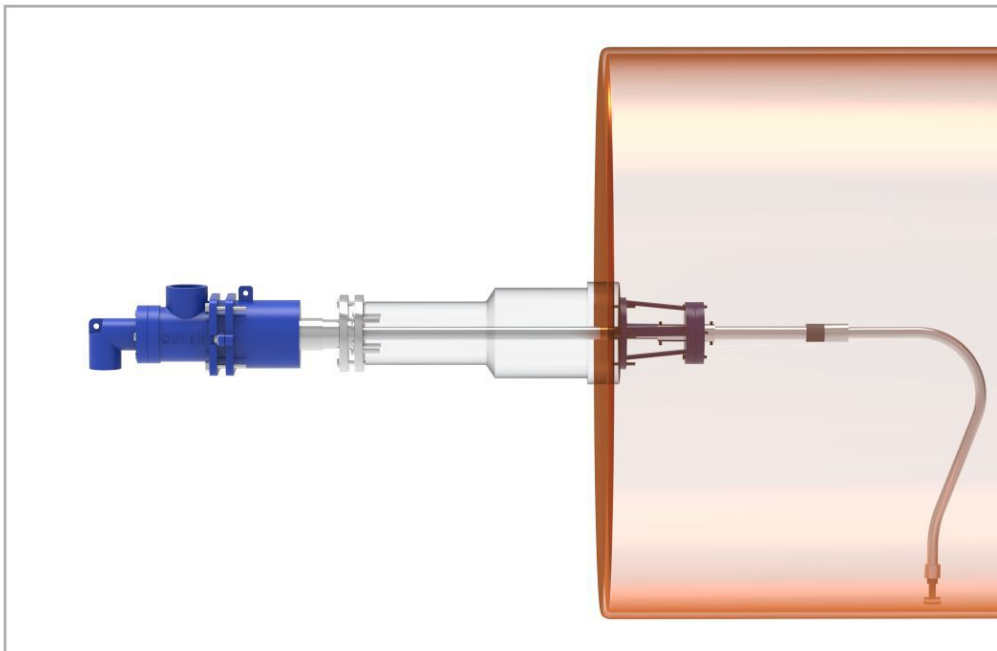


Stationary Syphon Rotary Joint



MODEL : ASF

SPEED	100mpm to 250mpm
SIZE	2" to 3"
TYPE	Threaded End & Quick Release System

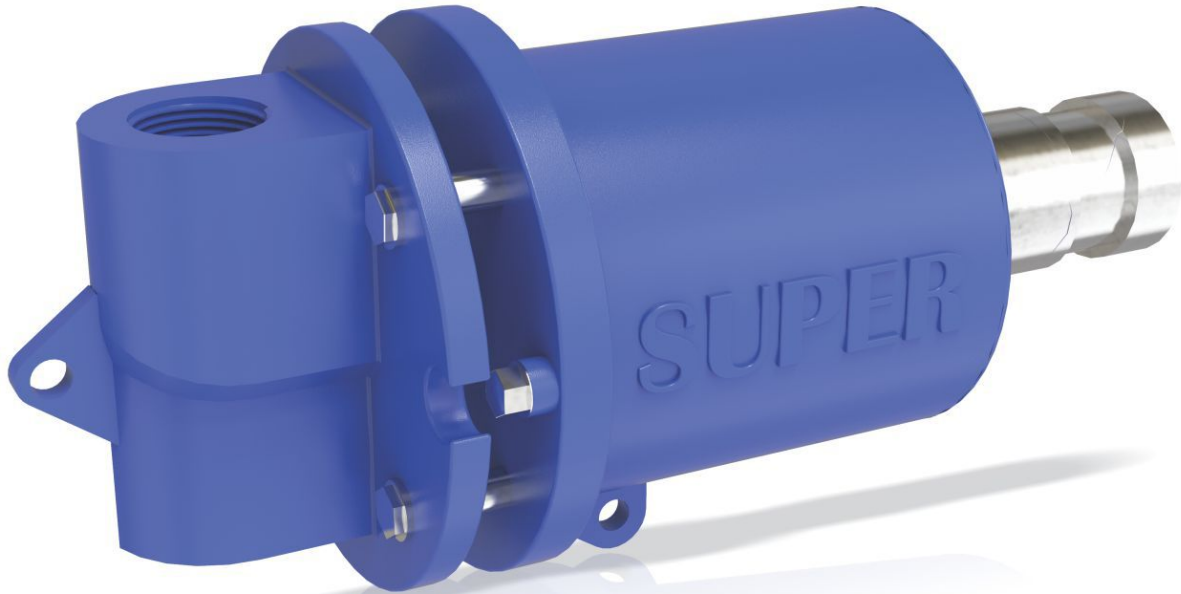


Rotary Joint With Dryer System

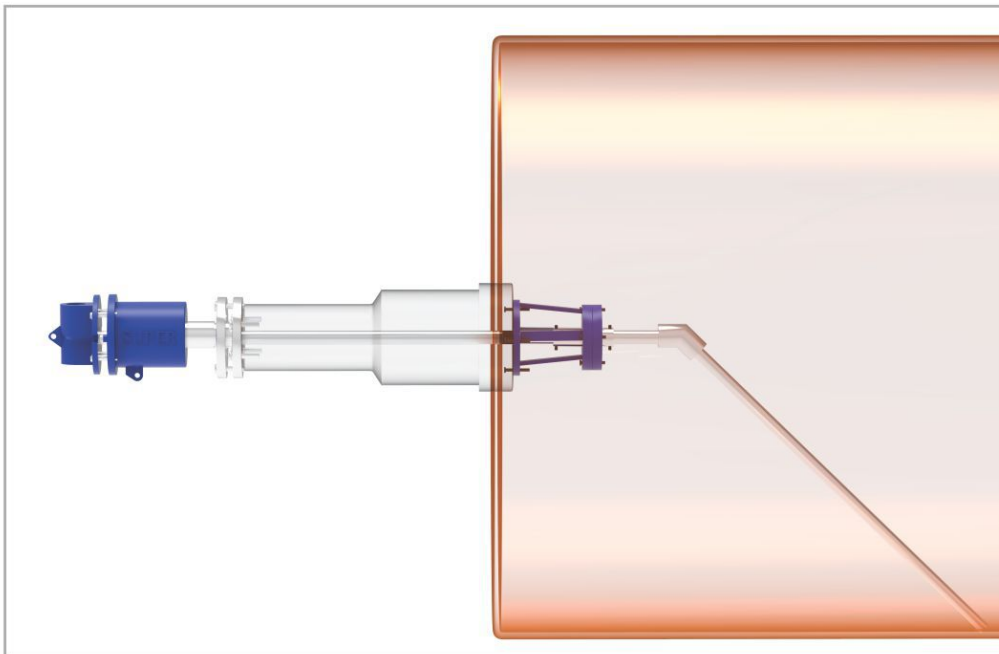
DUAL FLOW SYSTEM



Stationary Syphon Rotary Joint



MODEL : SES	
SPEED	50mpm to 150mpm
SIZE	1" to 4"
Type	Threaded End & Quick Release System

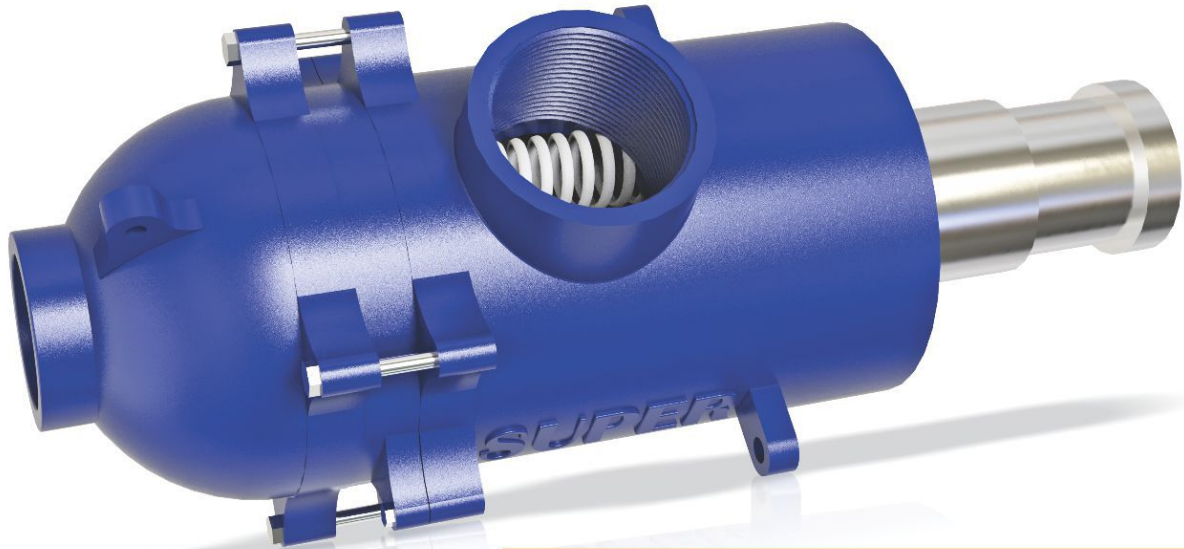


Rotary Joint with Dryer System

DOUBLE SCOOP TYPE BUCKET SYSTEM

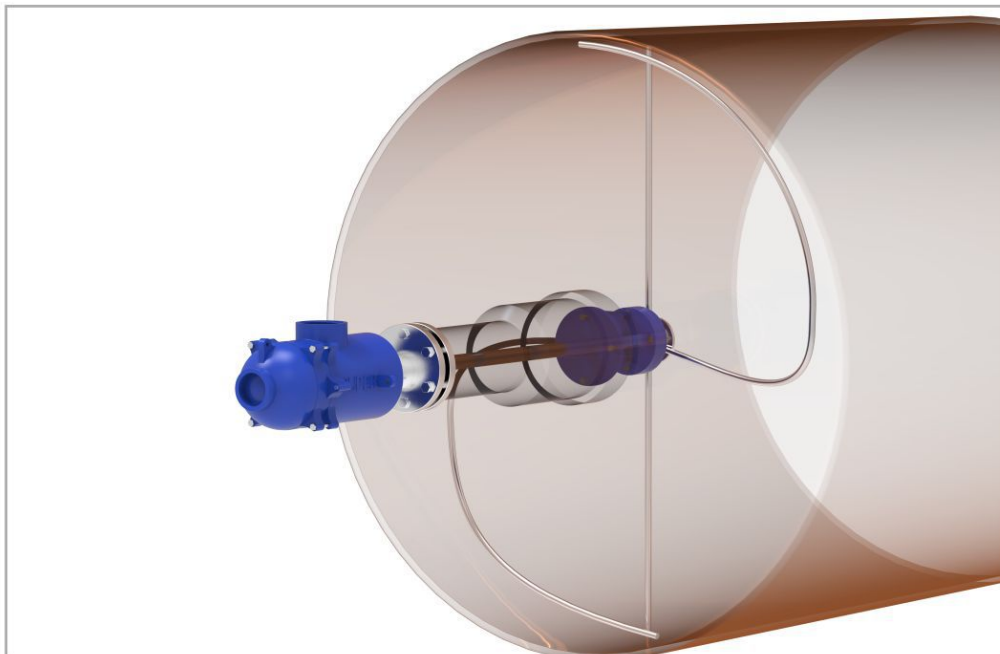


Rotating Syphon Rotary Joint



MODEL : HN

SPEED	Low Speed Rotary Joint
SIZE	2" To 5"
TYPE	Threaded End & Quick Release System

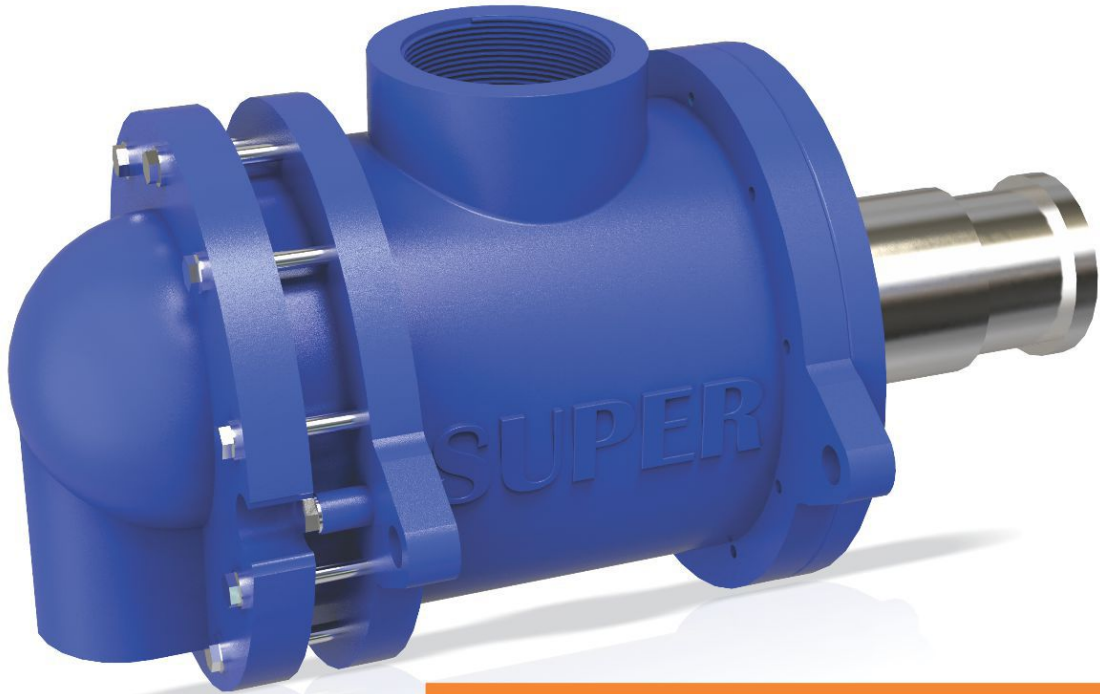


Rotary Joint for MG Dryer System

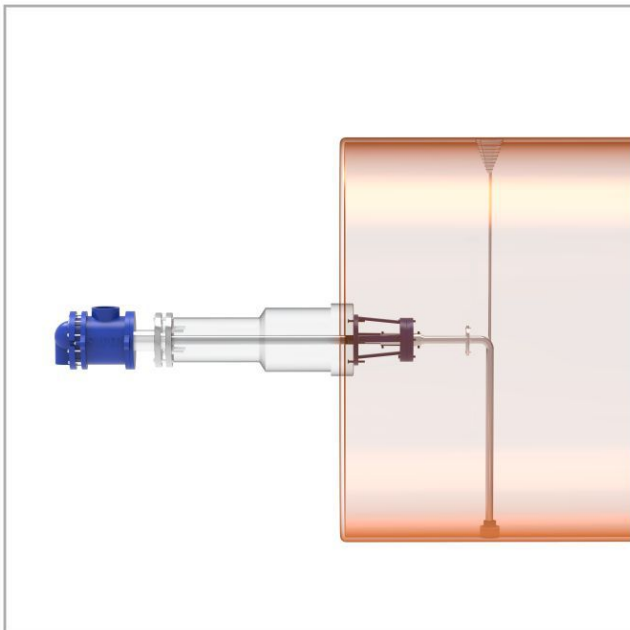
DOUBLE SCOOP TYPE BUCKET SYSTEM



Rotating Syphon Rotary Joint



MODEL : LNRD	
SPEED	Low Speed Rotary Joint
SIZE	2" to 6"
TYPE	Threaded End & Quick Release System

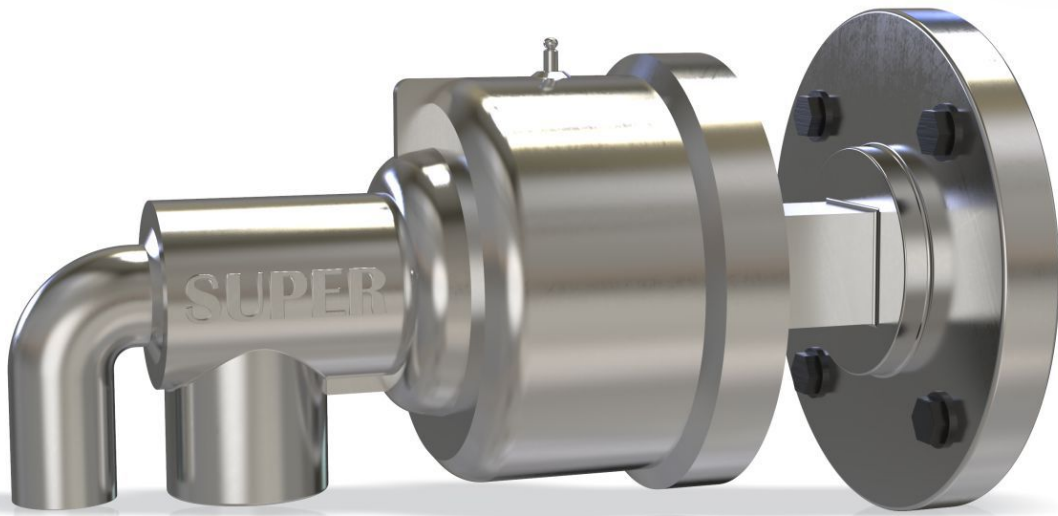


Single Scoop System



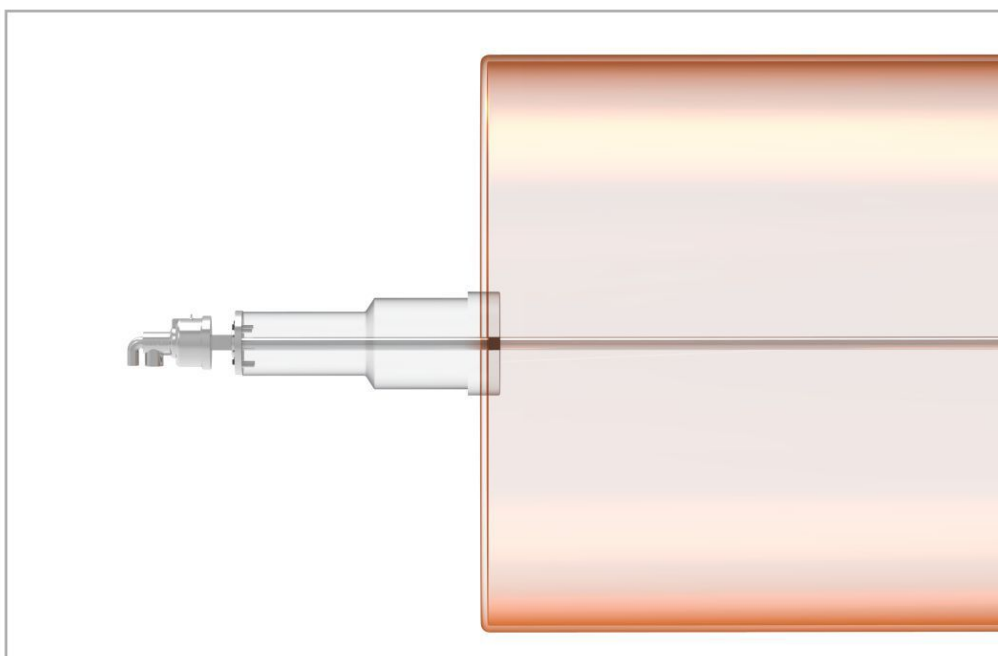
Double Scoop Type Bucket System

BEARING TYPE ROTARY JOINT (DUAL FLOW)



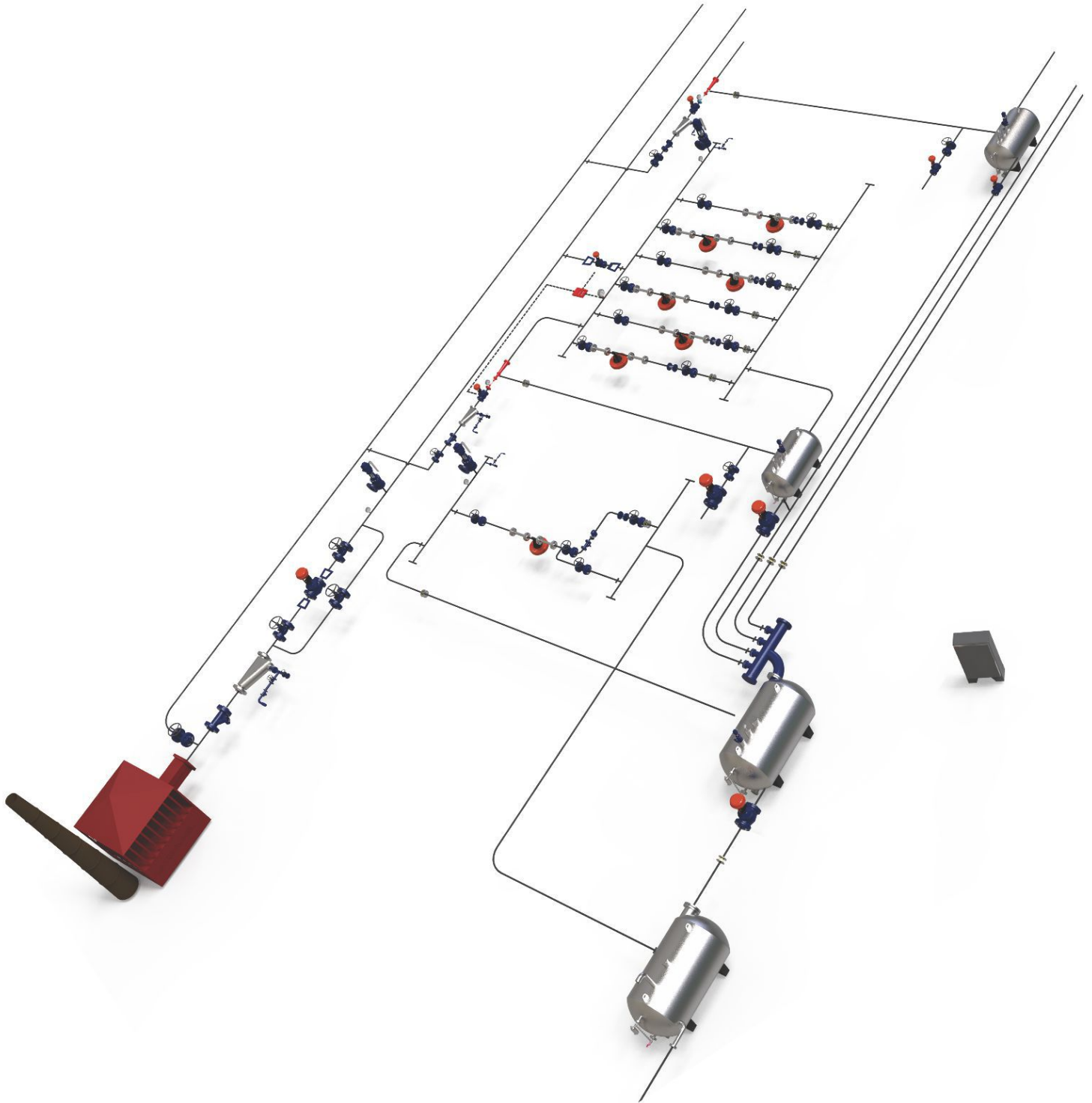
MODEL : AS-2

APPL.	Normal Water & Chilled Water
SIZE	3/4" to 4"
TYPE	Threaded End & Quick Release System
MOC	SS 304 (CF8)
SPEED	50rpm to 500rpm

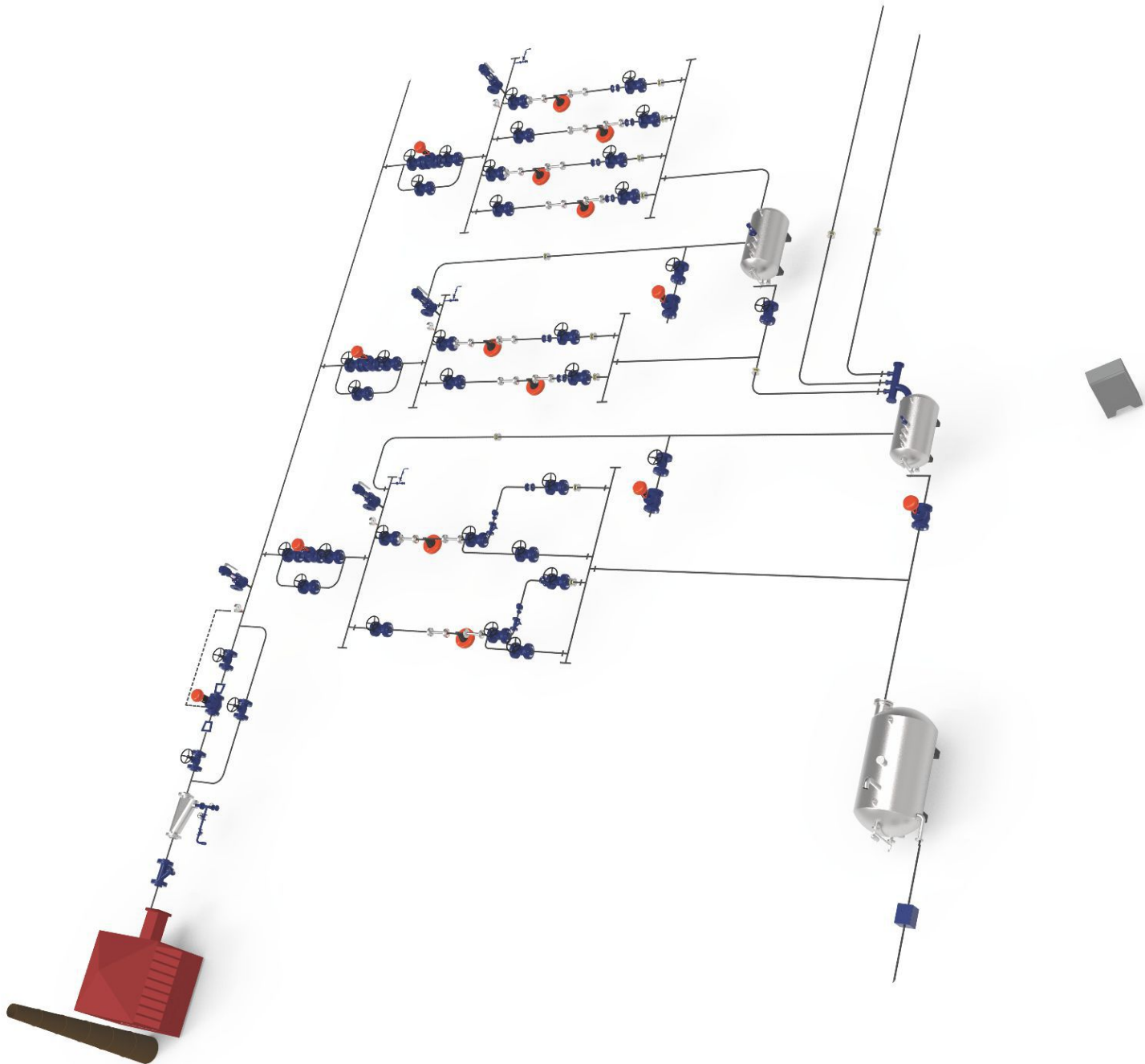


ROTARY JOINT FOR JUMBO PRESS SYSTEM
POPRI & REWINDER SYSTEM

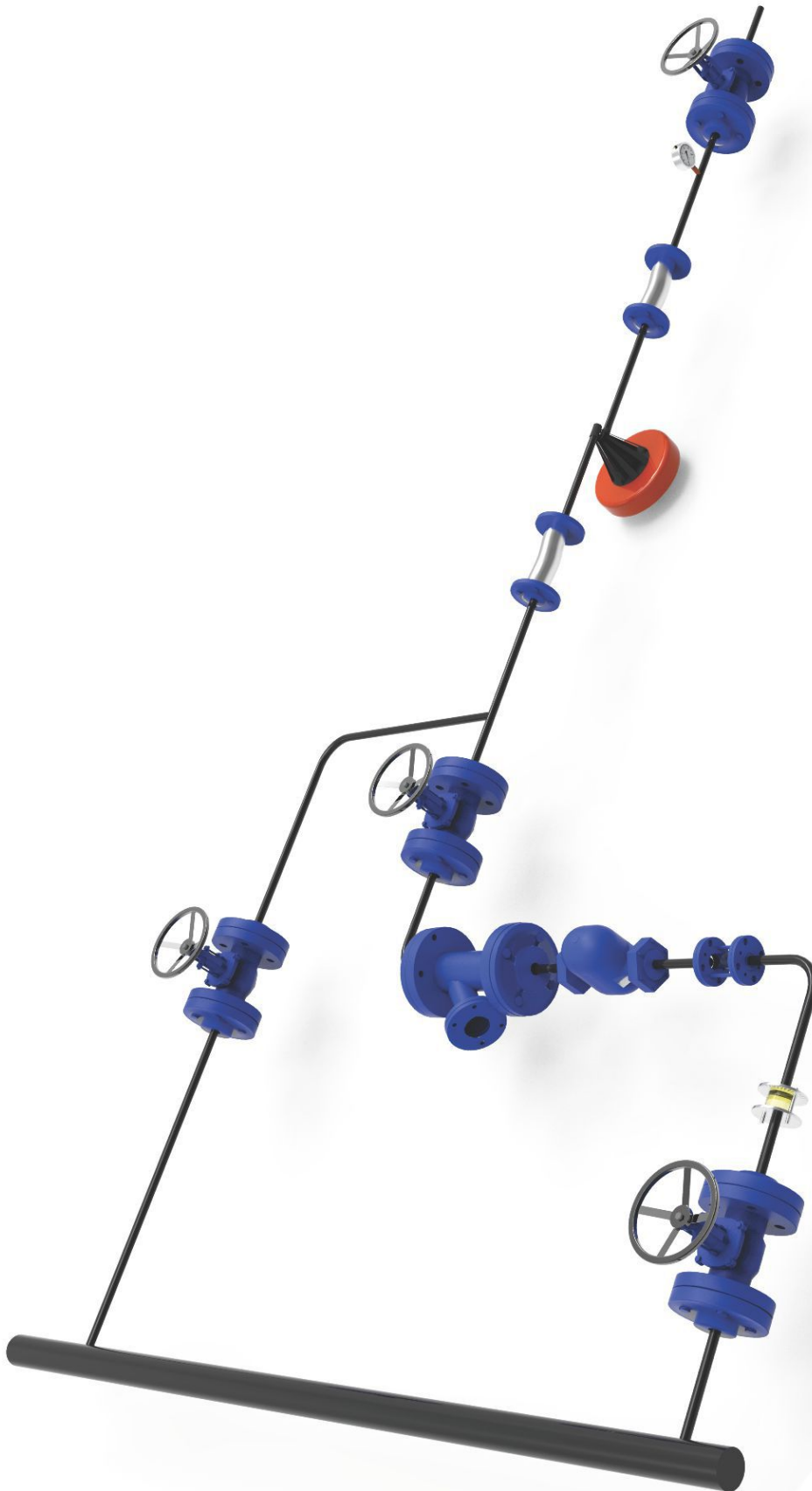
THERMOCOMPRESSOR - SYSTEM



CASCADE-SYSTEM



ROTARY JOINT BASED STEAM & CONDENSATE SYSTEM



Our Product Range

- All type of Rotary Joints
- Steam inlet & Condensate outlet System
- Blow Through System
- Cascade System
- IBR Approved all type of materials
- PRS System
- Steam and Condensate Recovery System
- All type of Globe & Piston Valves



SUPER STEAMTECH INDIA

Office:

339/229/8, Ahmed Hussain's Chawls,
Opp. Water Tanks Gate No. 2, Dudheshwar Road,
Ahmedabad - 380004, Gujarat, (India).
Phone: 079 - 25620006
Cell: +91 - 8000002166, 7046453976
Email: info@supersteamtechindia.com
Web: www.supersteamtechindia.com

Branch Office (North):

A.R. Engineer & Allied Product
B-82, Pandav Nagar, Meerut,
U.P. - 250003. (India)
Director (North Zone) : +91 - 9997919994, 7055658658
Email: arangineer12@gmail.com