



SUPER STEAMTECH INDIA



We are Manufacturing of Rotary Joint,
All type of Valves and Accessories



PNEUMATIC DIAPHRAGM CONTROL VALVE

| | |
|-----------------|--|
| Model | : CHD & CLD |
| Actuator | : Spring return type, Heavy duty Pneumatic Diaphragm |
| Type | : Normally Close/Open |
| Size | : 1/2" to 8" |
| Body | : WCB |
| Diaphragm Cover | : M.S. (Steel Metal) |
| Working Press | : 150#/300#/600# |
| Working Temp | : 220°C / 450°C |
| Seating | : Metal to Metal & Soft Seated |
| Media | : Air, Water, Oil, Gas, Steam & Hydraulic Oil |

GLOBE VALVE

| | |
|------------|----------------------------------|
| Model | : GLOBE TYPE & ND 40, ND 16 |
| Body | : Cast Steel (Astm A216 Gr. WCB) |
| Int. Parts | : S.S. 304 & S.S. 410 |
| Trims | : SS 13% Crom (AISI 410) |
| Class | : SA-150#/300#/600#/900# |
| Ends | : Flanged |
| Size | : 15mm to 300mm |



PISTON VALVE

| | |
|-------|---|
| Body | : Cast Steel (Astm A216 Gr. WCB) / C.I. |
| Trims | : SS 13% Crom (AISI 410) |
| Class | : SA-150#/300#/600#/900# |
| Ends | : Flanged |
| Size | : 1" to 6" |

GLOBE VALVE (GUN METAL)

| | |
|-------|--------------|
| Body | : Gun Metal |
| Trims | : S.S. 304 |
| Class | : 150#/300# |
| Ends | : Screwed |
| Size | : 1/2" to 3" |





BUTTERFLY VALVE

| | |
|-------------|-------------------------------|
| Seat Design | : Rubber Lining / Replaceable |
| Operating | : Lever Operated |
| Body | : C.I./C.S. (WCB) |
| Disc. | : C.I./S.S.304 |
| Design | : Lug Type |
| Size | : 40mm to 500mm |
| Operation | : Offset Disc. |
| Ends | : Wafer Type |

BALL VALVE

| | |
|--------|---------------------|
| Body | : WCB/CF8/CF8M |
| Design | : 2 Pc. /3 Pc. |
| Ends | : Screwed / Flanged |
| Size | : 1/2" to 10" |



PULP VALVE

| | |
|-------|--|
| Body | : C.I. (IS 210Gr. FG 220/260) S.S. 304/S.S. 316 |
| Parts | : S.S. 13% Cr./ S.S.304 S.S. 316 |
| Press | : 6 kg./cm ² Max |
| Oper. | : Manually/Pneumatically/Electrically |
| Ends | : Wafer Type |
| Size | : 40mm to 500mm |

FLEXIBLE HOSE PIPE

| | |
|----------|---------------------------------|
| Material | : S.S. Corrugated / EPDM Rubber |
| Class | : SA-150# |
| Ends | : Flanged / Screwed |
| Size | : 1/2" to 6" |





RINGS AND GUIDES

| | |
|----------|--|
| Material | : Carbon Filled Teflon / Carbon Graphite / Imported Carbon (CY10C) |
| Size | : 1/2" to 6" (as per your drawing) |

DISC CHECK VALVE (DCV)

| | |
|-----------------|---|
| Body | : ASTMA 351 GR. CF8 / CF8M |
| Disc | : AISI 304 or AISI 316 (Bar Stock) |
| Spring | : AISI 304 or AISI 316 (Standard Stock) |
| Disc Seat | : Metal to Metal |
| Spr. Retainer | : AISI 304 or AISI 316 |
| Pressure Rating | : Pn40 |
| Flange Standard | : BS 10 Table D, E & H |



BALL FLOAT TYPE STEAM TRAP

| | |
|----------|----------------------|
| Material | : C.I. Greaded |
| Internal | : S.S. 304 |
| Ends | : Threaded / Flanged |
| Size | : 1/2" to 2" |

SYPHON ELBOW

| | |
|----------|----------------------|
| Material | : S.S. 304/Gun metal |
| Ends | : Screwed |
| Size | : 1/4" to 1" |





STRAINER

| | | |
|-----------|---|--|
| Body | : | C.I. (IS 210Gr. FG 220/260) C.I. (ASTM A216 Gr. WCB) CSS (ASTM A351CF8/CF8M) |
| Mess | : | S.S.304 S.S. 316/Brass |
| Type | : | IBR & Non IBR |
| Class | : | ND-40, ASA-150, ASA-300 |
| Ends | : | Flanged / Screwed/Socketweld |
| Size | : | 15 mm to 150mm |
| Available | : | IBR & Non IBR |

SAFETY VALVE

| | | |
|----------------|---|----------------------|
| Body | : | C.I., WCB, Gun Metal |
| Internal Parts | : | S.S. 304 |
| Class | : | 150#/300# |
| Ends | : | Flanged Screwed |
| Size | : | 1/2" to 6" |
| Available | : | IBR& Non IBR |



SIGHT GLASS / TUBE GLASS

| | | |
|-------|---|----------------------------|
| Body | : | CS Gun Metal / CF81 CF8M |
| Glass | : | Toughened Borosil |
| Seat | : | PTFE |
| Ends | : | Screwed / Flanged |
| Size | : | 1/2" to 4" |

TD-3 TRAP

| | | |
|------------|---|-----------------------|
| Body | : | S.S.304 |
| Size | : | 15mm to 25mm |
| Ends | : | Screwed Socket weld |
| Max.Intel | : | 32kg./cm2 at 425°C |
| Min. Press | : | 0.25 kg./cm2 |
| Available | : | IBR & Non IBR |





FORGED STEEL GLOBE VALVE

| | |
|-----------|--|
| Body | : Forged Steel 105, F304, F316, F11, F22 |
| Trims | : SS 13% Crom (AISI 410) Stultified |
| Size | : 15mm to 50mm |
| Class | : ASA-800/1500/25003 |
| Available | : IBR & Non IBR |



PRESSURE GAUGE

| | |
|-------|----------------------|
| Media | : Steam & Air |
| Size | : 2" Dail to 8" Dail |



TEMPERATURE GAUGE

| | |
|-------|----------------------|
| Media | : Steam |
| Size | : 4" Dail to 8" Dail |



PRESSURE REDUCING VALVE

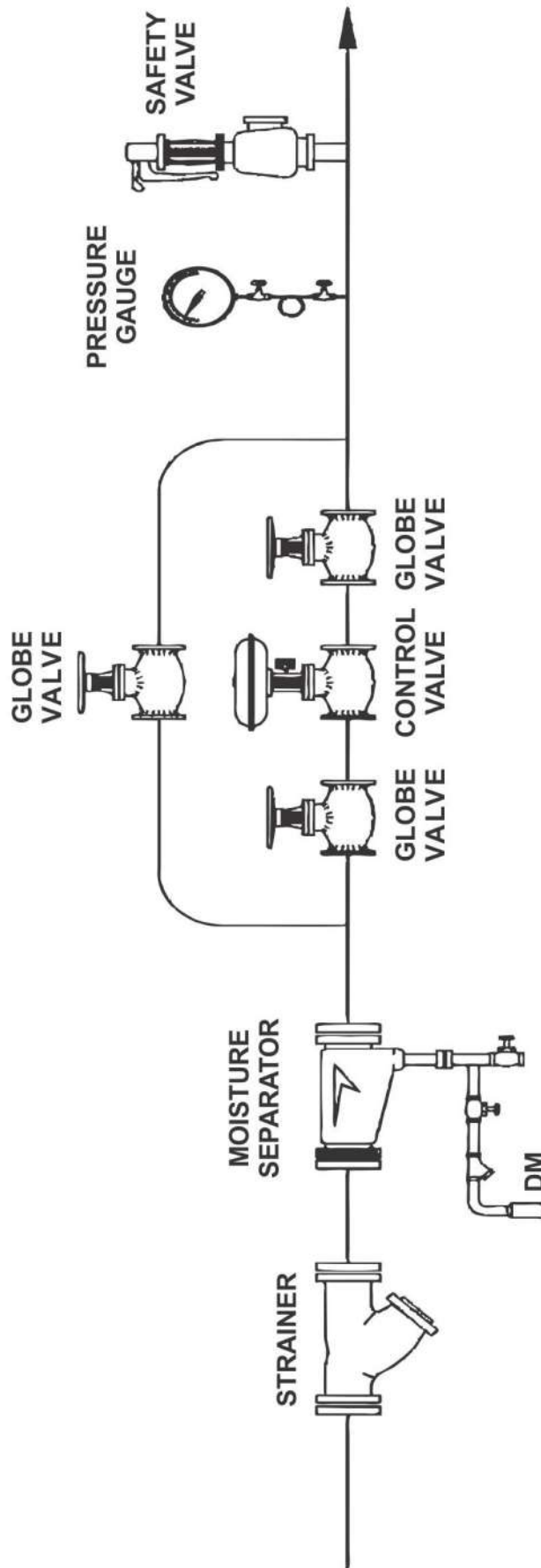
| | |
|-----------|-----------------|
| Body | : WCB |
| Trims | : SS 304 |
| Size | : 2" to 6" |
| Operating | : 2" to 6" |
| Available | : IBR & Non IBR |

MOISTURE SEPARATOR

| | |
|-----------|-----------------|
| Body | : WCB |
| Type | : IBR & Non IBR |
| Class | : ASA-150#/300# |
| Ends | : Flanged |
| Size | : 2" to 6" |
| Available | : IBR & Non IBR |



IBR LINE PRESSURE REDUCING SYSTEM



Our Product Range

- All type of Rotary Joints
- Steam inlet & Condensate outlet System
- Blow Through System
- Cascade System
- IBR Approved all type of materials
- PRS System
- Steam and Condensate Recovery System
- All type of Globe & Piston Valves



SUPER STEAMTECH INDIA

Office:

339/229/8, Ahmed Hussain's Chawls,
Opp. Water Tanks Gate No. 2, Dudheshwar Road,
Ahmedabad - 380004, Gujarat, (India).
Phone: 079 - 25620006
Cell: +91 - 8000002166, 7046453976
Email: info@supersteamtechindia.com
Web: www.supersteamtechindia.com

Branch Office (North):

A.R. Engineer & Allied Product
B-82, Pandav Nagar, Meerut,
U.P. - 250003. (India)
Director (North Zone) : +91 - 9997919994, 7055658658
Email: arangineer12@gmail.com